

Geometric Landscape

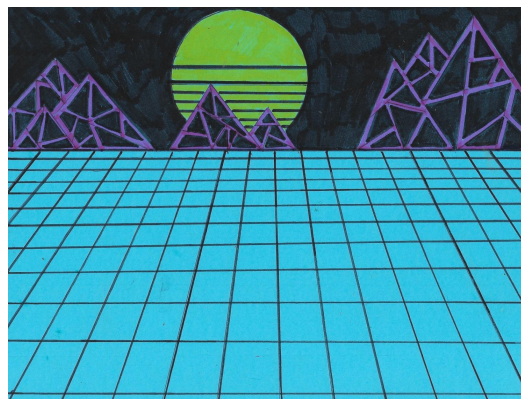
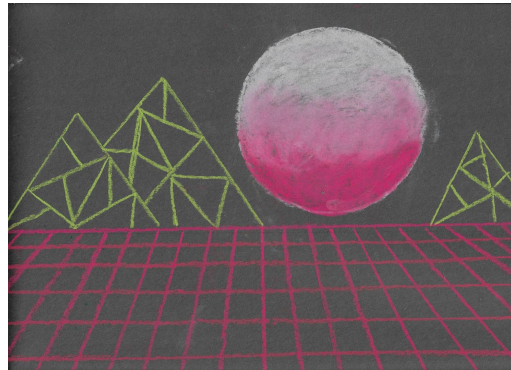
Senior (9-12 years)

What we are going to do:

Use your imagination to create a geometric landscape using perspective drawing

What you will need:

- Cardstock or craft paper
- Marker or Pastels or any neon colours in any medium
- Ruler
- pencil and eraser



What you can also use:

- Neon paint

Geometric Landscape



In the 80's and 90's it was a time for a lot of bright neon colours and patterns. Video arcades were a popular past time for many .These landscapes are reminiscent of the movie and game *Tron* with it's futuristic looking style. This kind of landscape was sometimes associated with music and the digital world. This would have been created before the invention of the everyday computer.

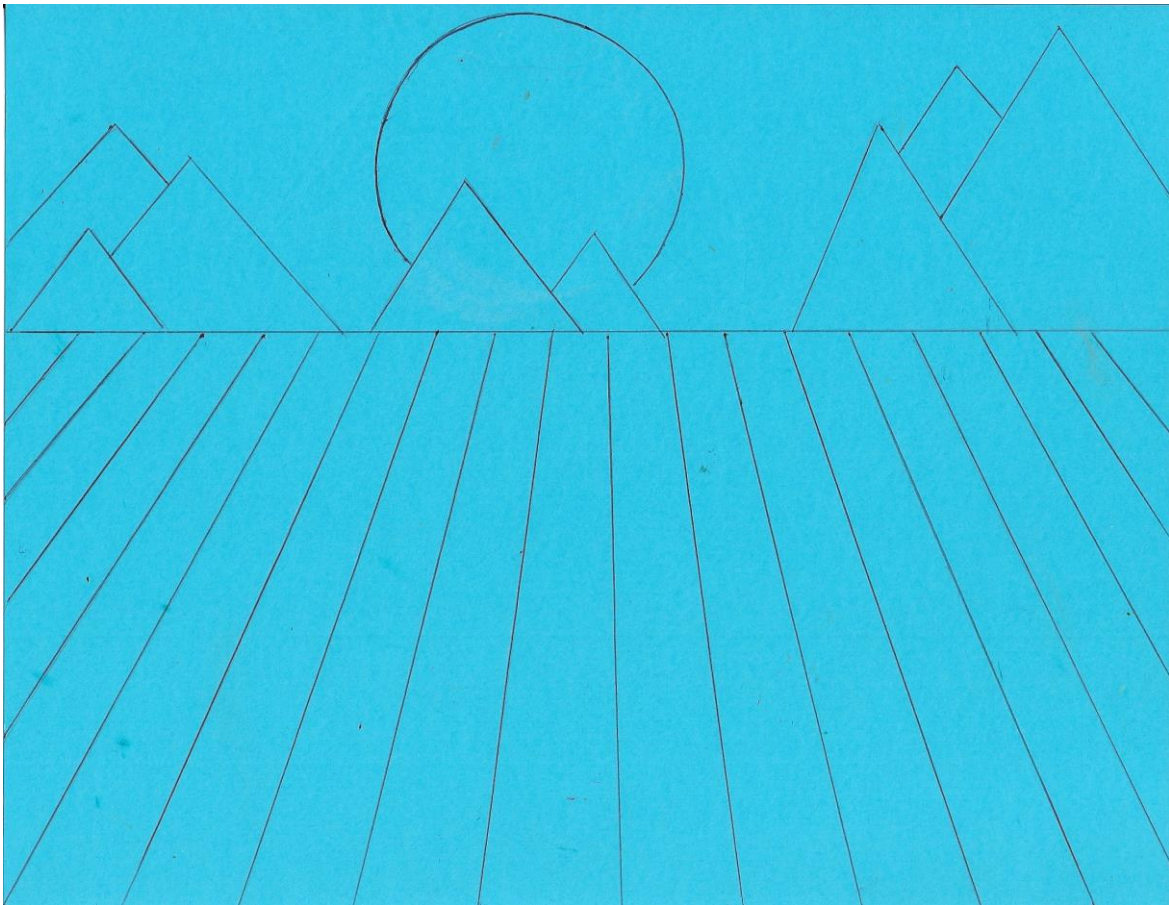
These landscapes show perspective in a very simple way – lines are closer together in the distance and farther apart in the foreground (space closest to the bottom of the paper). Let's create a neon geometric landscape using perspective!

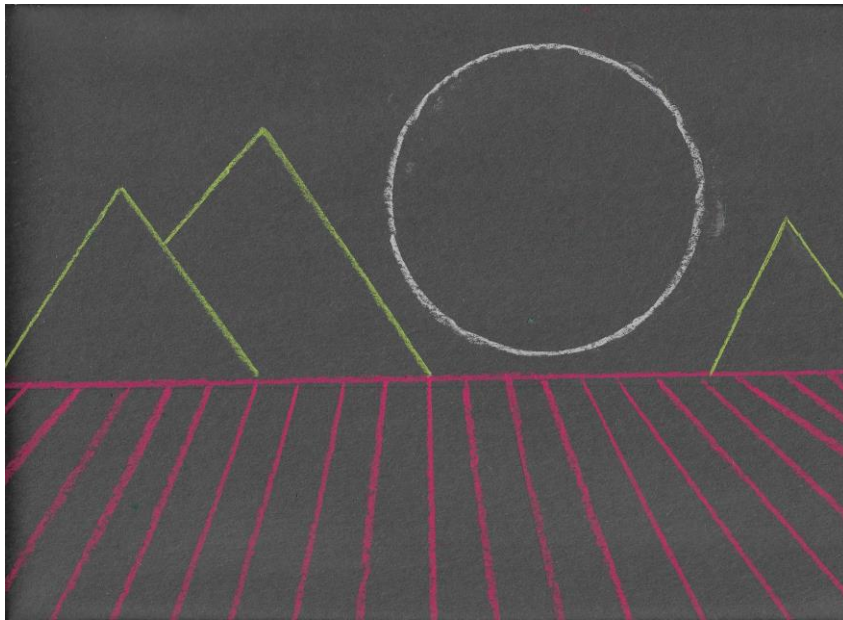


1

DRAW YOUR LINES

The first step is to layout all the parts of your landscape. Start by drawing the horizon line; this is the line that divides the sky from the land. If you're using a coloured piece of paper other than black you can use a pencil and eraser to draw your lines. With black or dark coloured paper you may have to use the colour that you want in that particular area. Draw the mountains along the horizon line using triangles. Next, add a circle to create the sun or moon in the sky. Finally, add the vertical lines coming down from the horizon line. Have a smaller space at the top and a larger space at the bottom; by doing this you are creating perspective, and creating the impression of the mountains and sun/moon being farther in the distance.

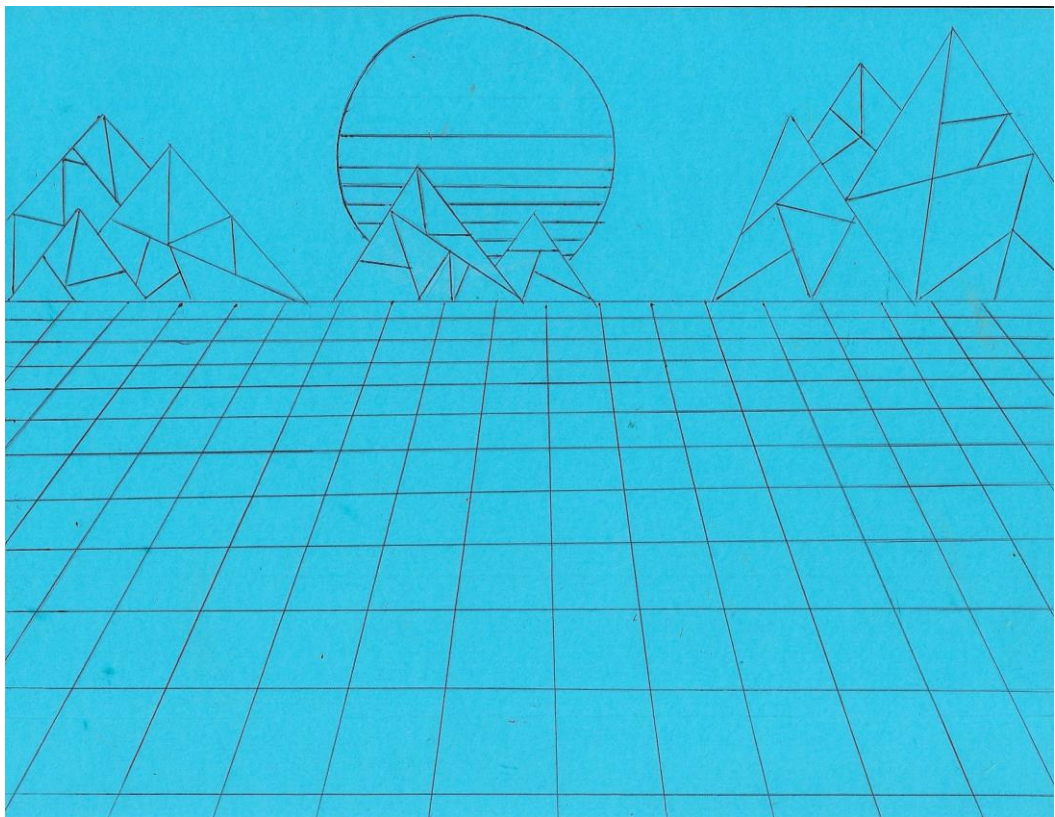




2

DRAW THE REST OF YOUR LINES

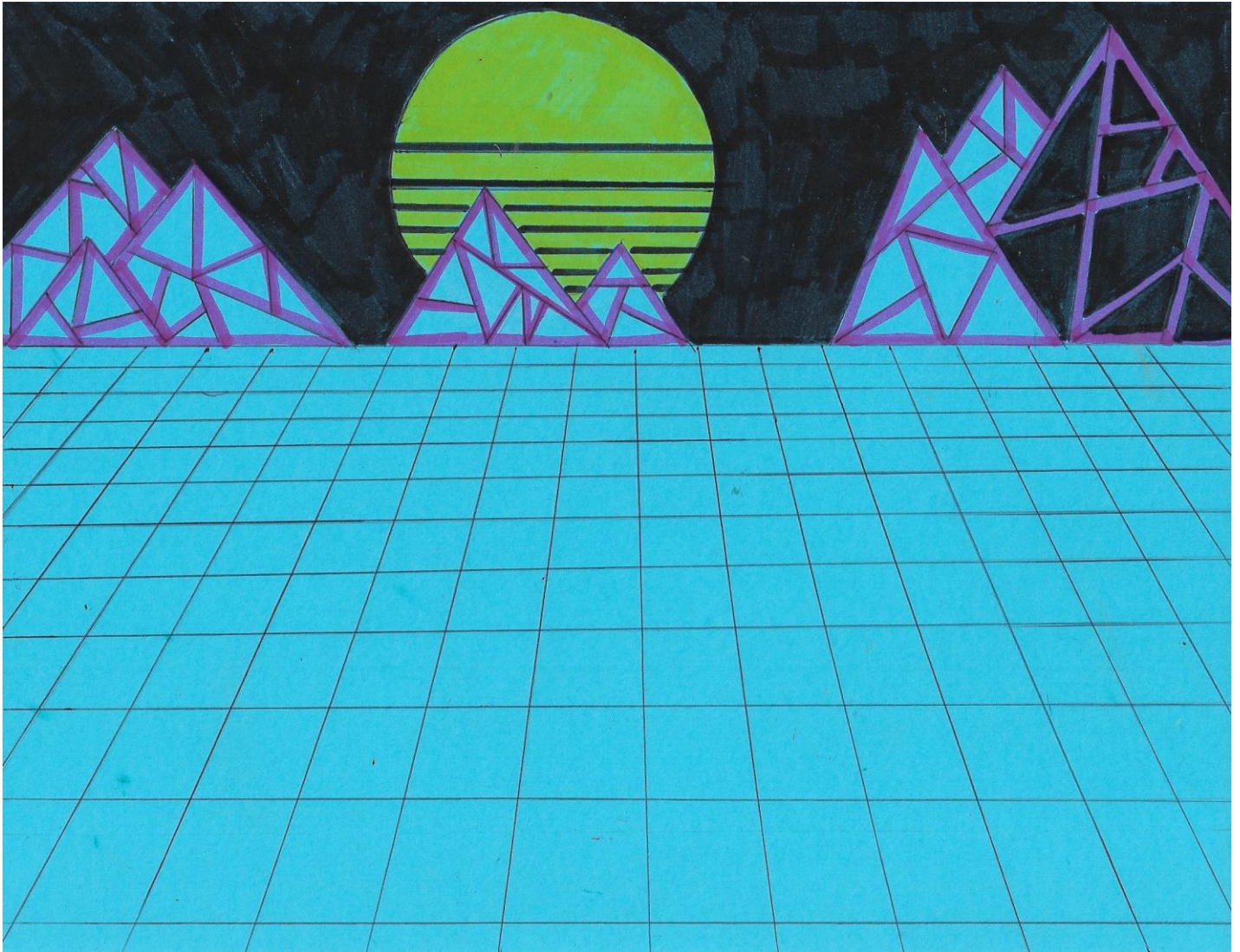
Just a few more lines need to be added before you can move on to adding colour. Horizontal lines can be added to show perspective. Near the horizon line have the lines closer together and as you move closer to the bottom of the paper start to spread them further apart. You can also add more lines in whatever direction you wish in your mountains to create more of a geometric look. I added some horizontal lines to the sun/moon too – you can choose to leave it simple or add lines.



3

START TO ADD COLOUR

Now it's time to add colour to your landscape. If you're using marker you may have to outline your shapes first with the lighter colours and then add the dark colour afterwards. If you're using pastel you can add any colour at any time. In the example below I outlined my mountains and then filled them in with black afterwards.



4

FILL IN THE SPACE

Lastly, fill your landscape in entirely with colour ! Make sure you use bright colours. Take a look at the two examples below.

