

Keith Haring Inspired Artwork

Tyke (4-5 years)

What we are going to do:

Create a colourful artwork inspired by the art of Keith Haring, a legendary artist from the 80 - 90's.

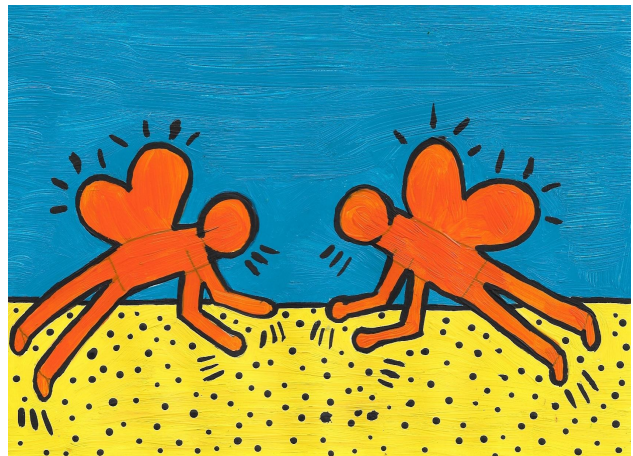
What you will need:

- Cardstock paper or painting paper
- Markers or Paint
- Paint (acrylic, tempera or watercolour)
- Paintbrushes
- Pencil and Eraser



What you can also use:

- Pencil crayons



Keith Haring Art

Since we're working with the theme of 80's and 90's this week, why not be inspired by the artwork being produced at that time! Keith Haring was a great example of an artist that created art that was different than the regular art seen in a gallery at that time. Graffiti art or street art is art that is on public display on buildings, streets, trains or any other type of publicly viewed space. Keith's colourful, playful and imaginative artworks often had many strong political meanings behind them. His work would be on display inside and outside the gallery. Take a look at his street art on the right and gallery artwork below. Now it's your turn to create an artwork using simple shapes and bold colours!



Photo: Keith Haring, *Tuttomondo*, Pisa, 1989

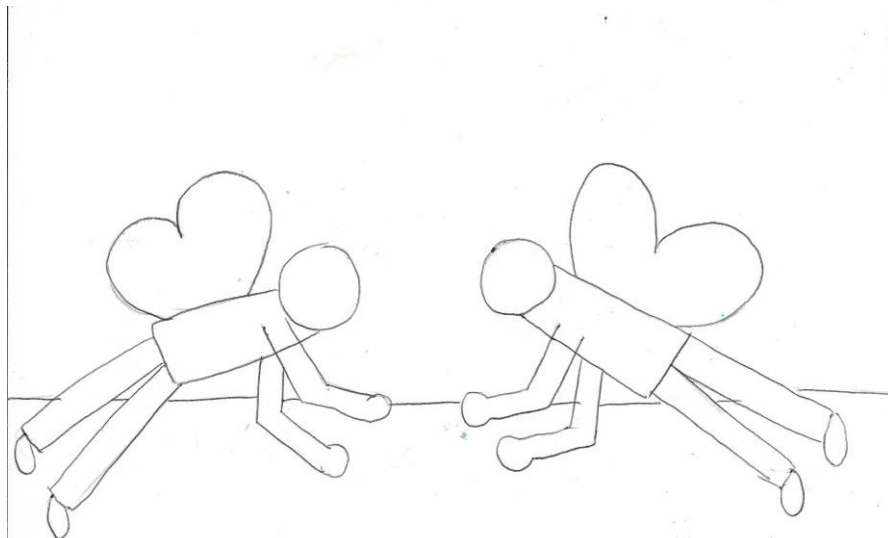
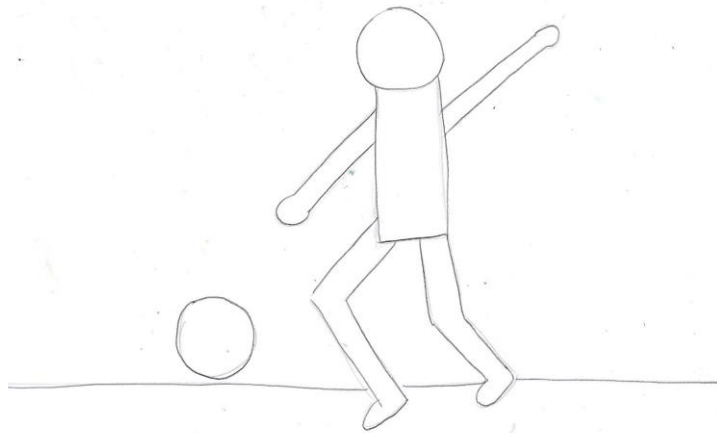


Photo Credit: MFA Masterworks: Keith Haring, *Retrospect*, 1989, silkscreen

1

DRAW THE SHAPES

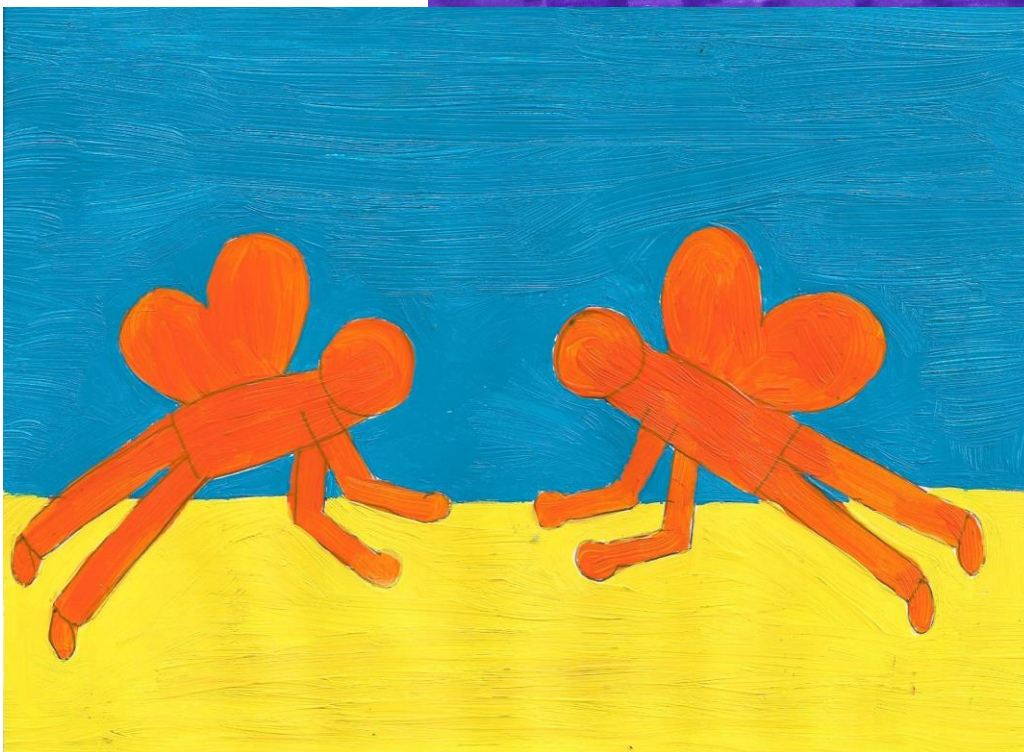
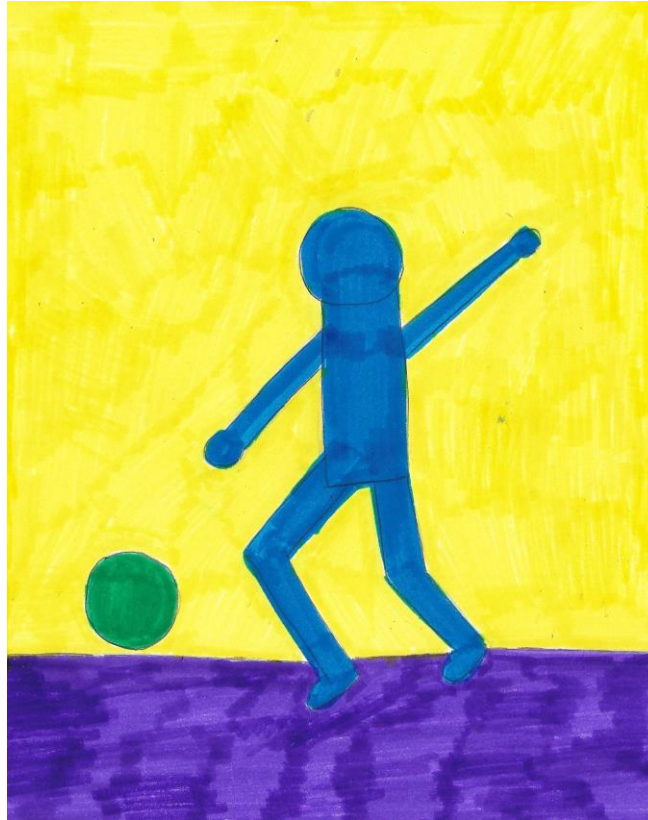
Let's get started! First decide what action and what shape you want your person, or person combined with an animal to be doing. Keith Haring often created lively scenes that came from his imagination. What can you imagine drawing when you close your eyes? I chose to draw a person playing soccer and two people with wings. Grab your pencil and eraser to make your design; for the head use a circle, for the body, legs and arms use rectangles. Also be sure to draw a line across the paper to separate the land from the sky. Take a look at the examples below



2

ADD COLOUR

Now it's time to add colour to your design. Keith Haring typically used 3-4 different bold colours in his artworks. Be sure you choose colours for your people/animals, land and sky that work well together. Don't use black as one of your colours because you'll be using it in the next step.



3

ADD THE BLACK LINES

It's the final step! Take a black marker or paint and draw an outline around your people/animals. Outline all your shapes, as well as the line that separates the sky from the land.

Now let's make it look like a true Keith Haring inspired artwork by adding dots to the land and lines to show movement around the people/animals. Go ahead and look at the examples below and refer back to the introduction to look at Keith's artwork.



